

**Features**

- ROHS Compliant
- High power rating
- High rejection

**Pricing**

Quantity	Unit Price
1 ~ 10	₩ 65,000
11 ~ 24	₩ 62,000
25 ~ 49	₩ 56,000
50 ~ 99	₩ 48,000
100 ~	₩ 36,000

**Electrical Specifications**

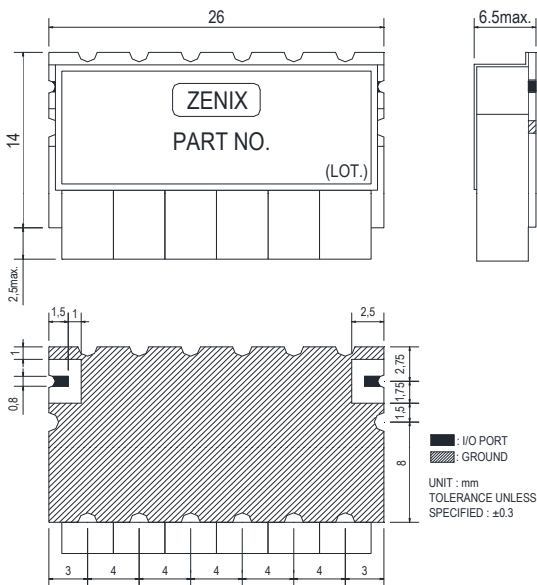
Parameter	Frequency (MHz)	Min.	Typ.	Max.	Unit
Center frequency	845	-	845	-	MHz
Bandwidth	70	810	-	880	MHz
Insertion Loss	810 ~ 880	-	1.8	3.0	dB
Ripple		-	0.3	0.5	dB
Return Loss		15.0	16.0	-	dB
Attenuation	130 ~ 690	65.0	70.0	-	dB
	1040 ~ 1960	65.0	70.0	-	dB
	-	-	-	-	-
	-	-	-	-	-
	-	-	-	-	-

**Maximum Ratings**

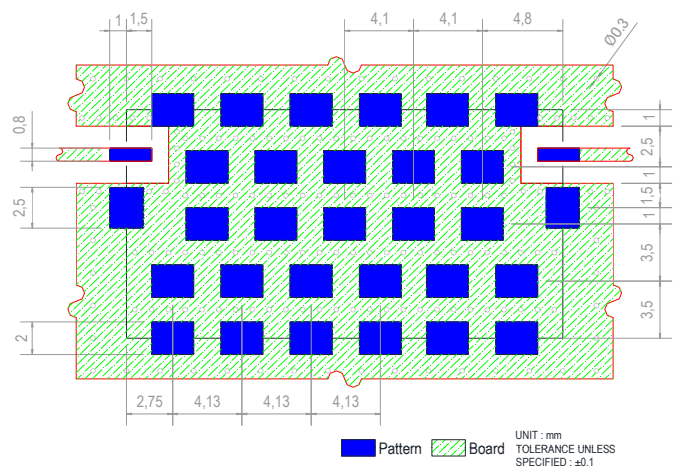
Input Power Handling	3Watt max.
Operating Temperature	-30°C to 70°C
Storage Temperature	-40°C to 95°C

• Permanent damage may occur if any of these limits are exceeded.

**Dimension**



**PCB Layout**



For product information and a complete list of distributors, please go to our website

[www.zenix08.com](http://www.zenix08.com)

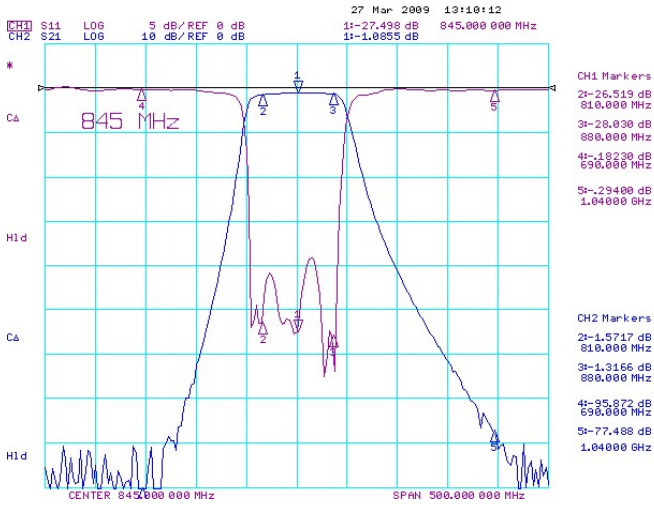
address : (Heungdeok IT Valley Tower-2111) 13, Heungdeok 1-ro, Giheung-gu, Yongin-si, Gyeonggi-do, Republic of Korea 16954

Tel : +82-31-8025-7100

Fax : +82-31-8025-7200

## Typical Performance Data at 25°C

- Insertion Loss, Ripple, Return Loss, Attenuation



- Attenuation

